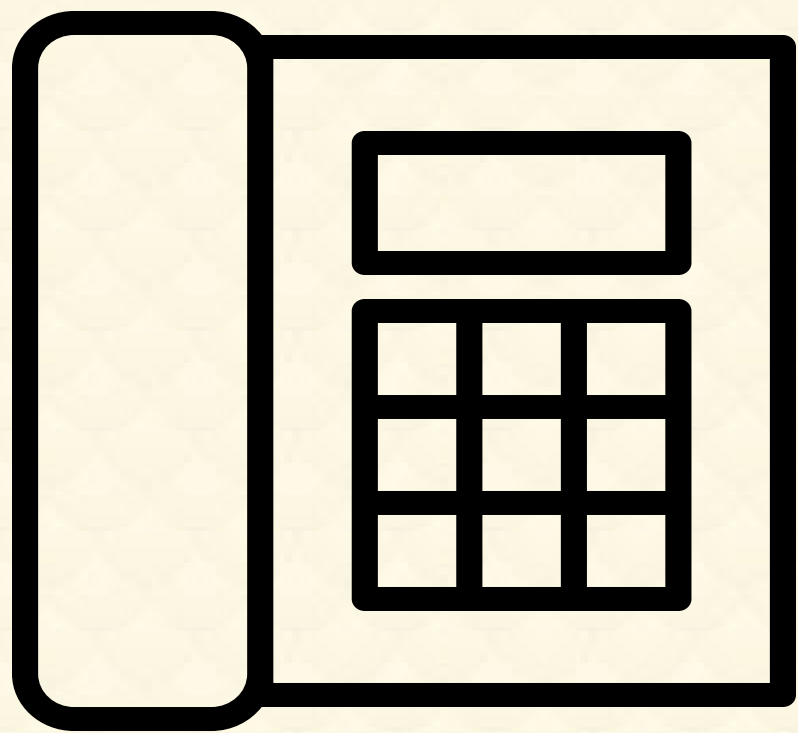


# 3 IMPACT AREAS FOR INDEPENDENT SCHOOL TECHNOLOGY


data and recommendations from the 2017 ATLIS Technology Impact and Efficacy Assessment

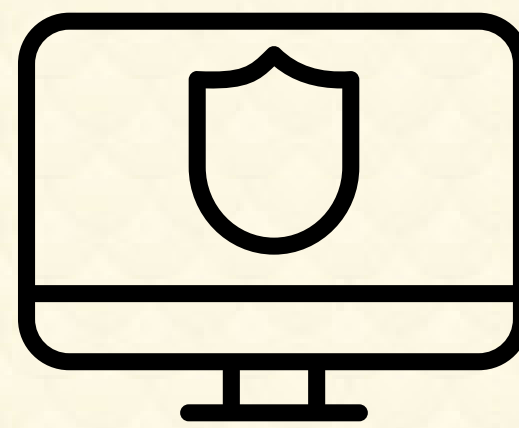


## IT Operations and Services

- Assure reliable systems for network/wifi, phones, AV, and copying
- Employ help desk ticketing systems and service level agreements
- Train faculty and staff in basic troubleshooting

## Cybersecurity and Data Protection

Clear policies and PD for faculty, admin, and staff 



## Edtech

- Lead intentional discussions across campus on the place of tech in school culture
- Contribute to curriculum design from the earliest stages
- Shift pedagogies to open classrooms, to invite submission in multiple drafts, and to embrace a variety of assessments
- Guide implementation of ISTE Standards for Students
- Design PD to facilitate personalized PD for faculty (especially PLNs)
- Act as home base for digital literacy programs